



G2 SERIES INTRINSICALLY SAFE

A full line of **FLOMEC® G2 Series Turbine Meters** are available in a variety of housing materials. Rugged and dependable, the G2 Series offers:

- Stainless Steel for most water and chemical products
- Aluminum for fuels and petroleum-based products
- PVDF for aggressive chemicals

FEATURES / BENEFITS

- Meter is designed for thin fluids < 100 cP
- Modular design allows for use with Output Modules, Sensors and Remote Display Kits
- 2 Totals (Batch Total = Resettable, Total = Non-Resettable); Rate of Flow, Factory calibrated in gallons or litres. Field calibratable. Includes non-volatile totals.
- High accuracy meter
- Internal parts are simple to replace for easy maintenance
- AAA Alkaline battery life: 2 years

PRODUCT CONFIGURATION

1 PRODUCT IDENTIFIER:

G2 = Industrial Grade Flowmeters

2 TURBINE MATERIAL:

S = Stainless Steel
A = Aluminum
P = PVDF (1/2 in. y 1 in. only)
X = Electronics only (For metal meters)
Z = Electronics only (For plastic meters)

3 TURBINE SIZE:

05 = 1/2 in. **15** = 1-1/2 in.
07 = 3/4 in. **20** = 2 in.
10 = 1 in.

4 FITTING TYPE:

N = NPT (Female)
I = ISO (Female) BSPT (ISO 7 Designation is RC)
F = 150# ANSI Flange (Available on S10, S15 & S20 only)
T = Tri-Clamp Fitting (Available on S05, S07, S10, S15 & S20 only)
X = No Turbine Body

5 ELECTRONIC CHOICE:

Computer Display, Meter Mounted
Q9 = Q9 2-Button Computer
Q1 = Q9 2-Button Computer, Vertical Mount (90° Adapter)
Retrofit Computer Kit (Display Only)
R9 = Q9 2-Button Computer Retrofit Kit (Replaces Q9 Display)
No Electronics - Turbine Only
XX = No Electronics - Turbine Only

6 CALIBRATION OF COMPUTER / DISPLAY:

GM = Gallons Per Minute (Gallons Default)
LM = Liters Per Minute (Litres Default)
GD = Gallons Per Minute (Gallons Default) with NIST Certificate
LD = Liters Per Minute (Litres Default) with NIST Certificate
XX = No Calibration

7 PACKAGING:

A = 05 Thru 10 Turbines, Turbine Only or w/Q9 Electronics
 05 Thru 20 Electronics Only (Q9 Replacement Kit or R9 Retrofit Kit)
B = 15 & 20 Turbines, Turbine Only or w/Q9 Electronics
 05 Thru 10 Turbines w/Q1 Electronics
C = 15 Thru 20 Turbine w/Q1 Electronics
D = 10 Turbines with ANSI Flange Turbine Only or w/Q9, Q1 Electronics
E = 15 & 20 Turbines with ANSI Flange Turbine Only or w/Q9, Q1 Electronics

APPLICATIONS

- Fuel Products
- Monitoring clean fluids
- Plant process water
- Chemical feed lines
- Harsh chemicals (sulfuric acid and bleach)
- Batching
- Blending
- Water
- Industrial fluids
- Plating solutions
- Ammonium
- Food and beverage processing

1 2 3 4 5 6 7
 ---->>> G2 S 15 N Q9 GM B



SPECIFICATIONS

| | | | | | |
|----------------------------------|------------------------------------------------------------------------------------|--------------|--------------------|------------------|--------|
| Fitting Type: | NPT or ISO (Female) BSPT (ISO 7 designation is RC) | | | | |
| | 150# ANSI (S10, S15 y S20 only) | | | | |
| | Tri-Clamp (Stainless Steel only) - Fitting size is one size bigger than meter size | | | | |
| Meter Sizes Available: | 1/2" | 3/4" | 1" | 1-1/2" | 2" |
| Corresponding Tri-Clamp Fitting: | 3/4" | 1" | 1-1/2" | 2" | 2-1/2" |
| Housing Material: | 316 Stainless Steel, Aluminum, PVDF | | | | |
| Flow Range: | 1/2" (05) | 1 - 10 GPM | | (3.8 - 38 L/min) | |
| | 1/2" (05) <i>PVDF Only</i> | 1.2 - 12 GPM | | (4.5 - 45 L/min) | |
| | 3/4" (07) | 2 - 20 GPM | | (7.6 - 76 L/min) | |
| | 1" (10) | 5 - 50 GPM | | (19 - 190 L/min) | |
| | 1-1/2" (15) | 10 - 100 GPM | | (38 - 380 L/min) | |
| | 2" (20) | 20 - 200 GPM | | (76 - 760 L/min) | |
| Accuracy (% of Reading): | Turbine Only | | Turbine w/Computer | | |
| | 1/2" (05) | ± 2.0% | | ± 1.5% | |
| | 3/4" (07) | ± 1.5% | | ± 1.0% | |
| | 1" (10) | ± 1.5% | | ± 1.0% | |
| | 1-1/2" (15) | ± 1.0% | | ± 0.75% | |
| | 2" (20) | ± 1.0% | | ± 0.75% | |
| Repeatability: | ± 0.1% (PVDF is ± 0.3%) | | | | |

| | | |
|----------------------------------|-----------------------------------------------|------------------------------------------------------------------------------------|
| Pressure Rating: | | |
| Stainless Steel 316 SS | 1,500 psi (102 bar) | |
| Aluminum | 300 psi (21 bar) | |
| ANSI Flange 316 SS | Flange Rule | |
| Sanitary Flange 316 SS | Limited by fitting, clamp size, & temperature | |
| PVDF | 100 psi (6.9 bar) | |
| Operating Temperature Range: | -40° F to 250° F (-40° C to 121° C) | |
| | (PVDF) -20° F to 180° F (-28° C to 82° C) | |
| with Intrinsically Safe Display: | 0° F to +129° F (-18° C to +54° C) | |
| Typical K-Factor: | 1/2" (05) | 2,500 PPG (660 Pulses/L) |
| | 3/4" (07) | 1,100 PPG (291 Pulses/L) |
| | 1" (10) | 565 PPG (149 Pulses/L) |
| | 1-1/2" (15) | 215 PPG (57 Pulses/L) |
| | 2" (20) | 100 PPG (26 Pulses/L) |
| | | |
| Wetted Materials: | Housing: | 316 Stainless Steel or Aluminum |
| | Bearings: | 96% Alumina Oxide Ceramic |
| | Shaft: | Tungsten Carbide |
| | Rotor: | PVDF |
| | Rings: | 316 Stainless Steel |
| Wetted Materials PVDF: | Housing: | PVDF (15% Carbon Fiber Filled) |
| | Bearings & Shaft: | 98% Alumina Ceramic |
| | Rotor: | PVDF |
| | Rings: | Fluorocarbon (Optional PTFE) |
| | | |
| Frequency Range: | 1/2" (05) | 42-420 Hz @ 1-10 GPM (3.8-38 L/min) / 45-450 Hz @ 1.2-12 GPM (4.5-45 L/min) (PVDF) |
| | 3/4" (07) | 37-370 Hz @ 2-20 GPM (7.6-76 L/min) |
| | 1" (10) | 47-470 Hz @ 5-50 GPM (19-190 L/min) / 45-475 Hz @ 5-50 GPM (19-190 L/min) (PVDF) |
| | 1-1/2" (15) | 36-360 Hz @ 10-100 GPM (38-380 L/min) |
| | 2" (20) | 33-330 Hz @ 20-200 GPM (76-760 L/min) |
| Calibration Report: | Comes standard with G2 Series meters. | |
| | N.I.S.T. - Certification available. | |

DIMENSIONS

NOTE: Q9 Display adds 0.72 in. (18 mm) to height

Stainless Steel Models

| | S05, 1/2 in. | S07, 3/4 in. | S10, 1 in. | S15, 1 1/2 in. | S20, 2 in. |
|------------|--------------------|--------------------|--------------------|--------------------|--------------------|
| A = Height | 1.4 in. (35.6 mm) | 1.6 in. (40.6 mm) | 1.9 in. (48.3 mm) | 2.6 in. (66.0 mm) | 3.1 in. (78.7 mm) |
| B = Width | 2.0 in. (50.8 mm) | 2.0 in. (50.8 mm) | 2.0 in. (50.8 mm) | 2.7 in. (68.6 mm) | 3.4 in. (86.4 mm) |
| C = Length | 4.2 in. (106.7 mm) | 4.3 in. (109.2 mm) | 4.5 in. (114.3 mm) | 5.3 in. (134.6 mm) | 6.3 in. (160.0 mm) |

Aluminum Models

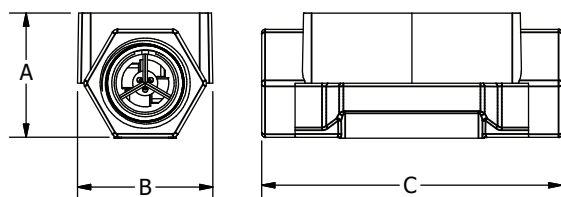
| | A05, 1/2 in. | A07, 3/4 in. | A10, 1 in. | A15, 1 1/2 in. | A20, 2 in. |
|------------|--------------------|--------------------|--------------------|--------------------|--------------------|
| A = Height | 1.8 in. (45.7 mm) | 2.0 in. (50.8 mm) | 2.2 in. (55.9 mm) | 2.8 in. (71.1 mm) | 3.2 in. (81.3 mm) |
| B = Width | 2.0 in. (50.8 mm) | 2.0 in. (50.8 mm) | 2.0 in. (50.8 mm) | 2.7 in. (68.6 mm) | 3.3 in. (83.8 mm) |
| C = Length | 4.2 in. (106.7 mm) | 4.3 in. (109.2 mm) | 4.5 in. (114.3 mm) | 5.3 in. (134.6 mm) | 6.3 in. (160.0 mm) |

PVDF Models

| | P05, 1/2 in. | P10, 1 in. |
|------------|--------------------|--------------------|
| A = Height | 3.2 in. (81.3 mm) | 3.3 in. (83.8 mm) |
| B = Width | 2.1 in. (53.3 mm) | 2.8 in. (71.1 mm) |
| C = Length | 7.3 in. (185.4 mm) | 8.1 in. (205.7 mm) |

NOTE: For representation purpose only. Actual product models vary in shape, design, etc

ANSI Flange and Sanitary Flange dimensions not shown. For those dimensions, please refer to product manuals or our website FLOMECmeters.com.



ACCESSORIES

| Part No. | Description | Part No. | Description |
|-----------|-------------------------|-----------|------------------------------------------|
| 120077-01 | FM Approved Sensor | 113275-10 | FM Approved Remote Kit |
| 120077-02 | ATEX Approved Sensor | 125206-2 | 1/2 in. Teflon O-Ring for PVDF Meter (2) |
| 125260-02 | 90° Display Adaptor Kit | 125206-1 | 1 in. Teflon O-Ring for PVDF Meter (2) |

APPROVALS



Wichita · Sydney

GREAT PLAINS INDUSTRIES



Service & Warranty: For technical assistance, warranty replacement or repair contact your **FLOMEC®** or **GPI®** distributor: In North or South America: **888-996-3837 / FLOMECmeters.com**
Outside North or South America: **+61 2 9540 4433 / FLOMECmeters.com**



02 SERIES ELECTRONIC FLOWMETER WITH SCALED PULSE OUTPUT

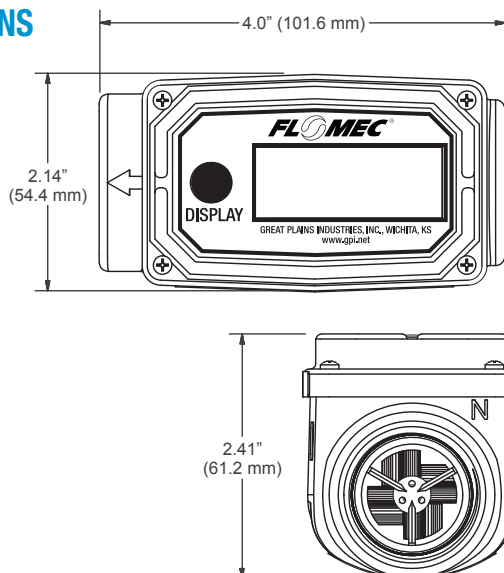
The **FLAMEC® 02 Series** is a lightweight, accurate and reliable turbine meter. Choose the 02 Series for thin viscosity fluid applications.

- Available in Aluminum or Nylon
- Virtually maintenance free
- Display powered by two AAA batteries
- Offers one pulse per unit (gallons and litres)

FEATURES / BENEFITS

- Complete meter, including turbine assembly, microprocessor and LCD readout.
- Two Totals: Batch (Resettable to measure flow during a single use) and Cumulative (Non-resettable, to provide continuous measurement).
- Remote monitor option to connect to an external system (NPN Open Collector Pulse)
- Lightweight, compact design allows for easy installation.
- Display powered by two AAA alkaline batteries that are easy to replace, with the meter installed.

DIMENSIONS



PRODUCT CONFIGURATION

PRODUCT IDENTIFIER 1

02 = Electronic Digital Flowmeter

HOUSING CHOICE 2

A = Aluminum

N = Nylon

FITTING TYPE 3

12 = 1" BSPT (Female)

31 = 1" NPT (Female)

52 = 1" BSPP (Female)

X = No Turbine

CALIBRATION 4

GM = Gallons / Minute

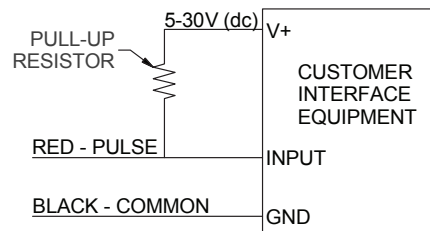
LM = Litres / Minute

XX = No Computer

1 2 3 4
---->>>> 02 N 31 GM

INTERNAL PULL-UP RESISTOR

Some interface devices may not have an internal pull-up resistor. Use a minimum 820 ohms resistor if necessary.



APPLICATIONS

- Irrigation
- Building Automation (Chillers)
- Programmable Logic Controller (Batch Control)
- OEM (connect to flow switch - low cost meter)
- Connect to flow switch
- Diesel & Fuel Oil
- Data Logger
- Wireless Communication
- Numerous water applications
- Batch Controller

SPECIFICATIONS

| | | |
|------------------------------|------------------------------------------------|----------------|
| Fitting Size / Fitting Type: | 1" BSPT (Female) | |
| | 1" NPT (Female) | |
| | 1" BSPP (Female) | |
| Flowrate: | 3 - 30 GPM | 11 - 113 L/min |
| Accuracy (% of Reading): | ± 5.0% | |
| Pressure Rating: | 150 psi (10.3 bar) | |
| Operating Temperature Range: | +14° F to +130° F (-10° C to +55° C) | |
| Pulse Out Description: | Open Collector (a.k.a. NPN or Current Sinking) | |
| Pulse Duration: | 250 ms | |
| Pulse Amplitude: | 5 to 30 V (dc) | |
| Scaling: | One pulse per Gallon or Litre | |
| Cable Length: | 5 ft. (1.5 m) | |

| | | |
|------------------------------|------------------|---------------------|
| Wetted Materials (Aluminum): | Housing: | Aluminum |
| | Bearings: | Ceramic |
| | Shaft: | Tungsten Carbide |
| | Rotor: | Nylon |
| | Rings: | 316 Stainless Steel |
| | Signal Generator | Ferrite |
| Wetted Materials (Nylon): | Housing: | Nylon |
| | Bearings: | Ceramicw |
| | Shaft: | Tungsten Carbide |
| | Rotor: | Nylon |
| | Rings: | 316 Stainless Steel |
| | Signal Generator | Ferrite |

APPROVALS



Service & Warranty: For technical assistance, warranty replacement or repair contact your **FLOMEC®** or **GPI®** distributor: In North or South America: **888-996-3837 / FLOMEC.net**
Outside North or South America: **+61 2 9540 4433 / FLOMEC.net**



A1 SERIES FLOWMETERS, ALUMINUM OPTION

FLOMEC® A1 Series Meters are designed as self-contained, battery-powered units. Select the A1 Series when you need an accurate meter for thin petroleum-based fluid applications.

- Available in Aluminum
- Available in three sizes
- Designed for thin petroleum based fluids

FEATURES / BENEFITS

- Unique package combines Turbine and LCD into a self-contained, compact, economical meter
- Local Display Computer features: 2 Non-Volatile Totals (Batch Total = Resettable, Total = Non-resettable) and Rate of Flow
- Output capabilities available to communicate with process control equipment
- Lightweight, compact design allows for easy installation
- AAA Alkaline battery life: 2 years
- 12 selectable engineering units (gallons or liters are standard defaults)
- Factory calibration

APPLICATIONS

- Fuel Transfer
- Batching / Blending
- Fuel Products



PRODUCT CONFIGURATION

1 PRODUCT IDENTIFIER:

A1 = Electronic Digital Meter

2 ELECTRONIC CHOICE:

Computer Display, Meter Mounted

Q9 = Q9 2-Button Computer

*Computer Display & Module, Meter Mounted**

P9 = Q9 2-Button Computer w/Pulse Out Module, includes External Power and 10 ft. of Cable

42 = Q9 2-Button Computer w/4-20mA Module and 10 ft. of Cable

*Module, Meter Mounted (No Display)**

PO = Pulse Out (Unscaled) Conditioned Signal Module w/Cable

Retrofit Computer Kit (Display Only)

R9 = Q9 2-Button Computer Retrofit Kit (Replaces Q9 Display)

No Electronics - Turbine Only

XX = No Electronics - Turbine Only

**All Electronics Approvals Void*

3 CALIBRATION:

GM = Factory Default Calibration in Gallons

LM = Factory Default Calibration in Liters

XX = No Computer

4 TURBINE SIZE:

A025 = Aluminum - Low Flow

A100 = Aluminum - 1 inch

A200 = Aluminum - 2 inch

X### = No Turbine**

***When ordering Display Only, the ### should be the turbine size.*

5 FITTING TYPE:

N = NPT (Female)

I = ISO (Female) BSPT

B = BSPP Female

X = No Turbine

6 PACKAGING:

*With FM, ATEX & IEC Approval for **HAZARDOUS AREA***

A1 = Standard or Low Flow, 1 inch (w/Q9 & R9 Electronics Choice)

A2 = Standard, 2 inch (w/Q9 & R9 Electronics Choice)

B1 = Standard or Low Flow, 1 inch Turbine Only

B2 = Standard, 2 inch Turbine Only

B3 = Display Only

*Non-Approved Version - **SAFE AREA ONLY***

C2 = Low Flow through 2 inch Turbines (w/P9, 42, & PO Electronics Choice)

1 2 3 4 5 6
---->>> A1 Q9 GM A100 N A1

APPROVALS†



IP65



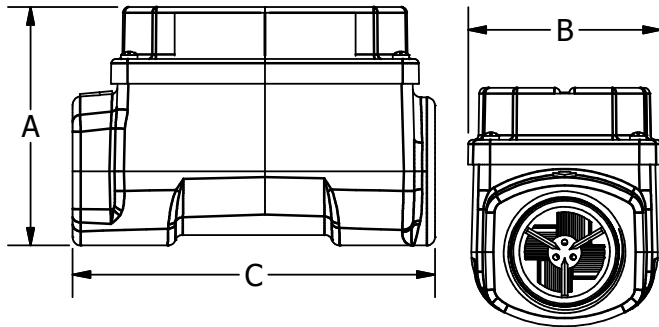
†All A1 Series Q9 Displays have the CE, NEMA 4, and IP65 approval.

SPECIFICATIONS

| | | | |
|------------------------------|------|-------------------------------------------------|-------------------|
| Meter Sizes Available: | | A025 (Low Flow), A100 (1 inch), A200 (2 inch) | |
| Design Type: | A025 | Paddlewheel | |
| | A100 | Turbine | |
| | A200 | Turbine | |
| Fitting Size / Fitting Type: | A025 | 1 inch / NPT, ISO ⁺ or BSPP (Female) | |
| | A100 | 1 inch / NPT, ISO ⁺ or BSPP (Female) | |
| | A200 | 2 inch / NPT, ISO ⁺ | |
| Flow Range: | A025 | 0.3 - 3 GPM | 1 - 11 L/min |
| | A100 | 3 - 50 GPM | 11 - 190 L/min |
| | A200 | 30 - 300 GPM | 114 - 1,135 L/min |
| Accuracy (% of Reading): | | A025: Application Dependent ¹ | |
| | | A100, A200: ± 1.5% | |
| Repeatability: | | A025 | ± 1.0% |
| | | A100 | ± 0.2% |
| | | A200 | ± 0.2% |

¹ISO 7 Designation is RC.

¹Accuracy can vary up to $\pm 5\%$ depending on installation and fluid type. Field calibration is recommended for best accuracy.



DIMENSIONS

| | A025, 1 in. Low Flow | A100, 1 in. | A200, 2 in. |
|--------------------|----------------------|-------------------|--------------------|
| A = Height* | 2.5 in. (6.3 cm) | 2.5 in. (6.3 cm) | 4.25 in. (11.4 cm) |
| B = Width | 2.0 in. (5.1 cm) | 2.0 in. (5.1 cm) | 3.0 in. (7.6 cm) |
| C = Length | 4.0 in. (10.1 cm) | 4.0 in. (10.1 cm) | 6.0 in. (15.2 cm) |

*Height includes 0.7 in. (1.8 cm) for the computer electronics.

| | | |
|-------------------------------------|-----------|-----------------------------------------|
| Pressure Rating (Aluminum): | | 300 psi (21 bar) |
| Operating Temperature Range: | | -40° F to 250° F (-40° C to 121° C) |
| with Safe Area Only Display: | | 0° F to 140° F (-18° C to 60° C) |
| with Intrinsically Safe Display: | | 0° F to 129° F (-18° C to 54° C) |
| Typical K-Factor: | A025 | 2,200 PPG (581 Pulses/L) |
| | A100 | 730 PPG (193 Pulses/L) |
| | A200 | 72 PPG (19 Pulses/L) |
| Frequency Range: | A025 | 11-110 Hz @ 0.3-3 GPM (1-11 L/min) |
| | A100 | 36.5-608.3 Hz @ 3-50 GPM (11-190 L/min) |
| | A200 | 36-360 Hz @ 30-300 GPM (114-1135 L/min) |
| Recommended Strainer Size: | | A025 55 mesh (275 μ m) |
| | | A100 28 mesh (700 μ m) |
| | | A200 28 mesh (700 μ m) |
| Wetted Materials (Aluminum): | Housing: | Aluminum |
| | Bearings: | Ceramic (96% Alumina) |
| | Shaft: | Tungsten Carbide |
| | Rotor: | Nylon |
| | Rings: | 316 Stainless Steel |
| Calibration Report: | | Comes standard with A1 Series meters. |
| | | N.I.S.T. – Certification available. |

ACCESSORIES

| Part No. | Description |
|-----------|-----------------------------------------------------------|
| 113275-10 | FM Approved Remote Kit Assembly [†] |
| 113435-10 | Conditioned Signal Output Module |
| 125260-02 | 90° Display Adapter Kit |
| 120077-01 | FM Approved Sensor Kit [†] |
| 120077-02 | ATEX Approved Sensor Kit [†] |
| 113524-01 | Connector Kit for FM or ATEX Approved Sensor [†] |
| 125060-10 | Pulse Out, External Power, Scaled Pulse Module |
| 125100-10 | 4-20 mA Module |

[†]Does not make Non-FM or Non-ATEX Approved meters FM or ATEX Approved.



A1 SERIES FLOWMETERS, NYLON OPTION

FLOMEC® A1 Series Meters are designed as self-contained, battery powered units. Select the A1 Series when you need an accurate meter for water or non-aggressive chemical applications.

- Available in Nylon
- Nylon meter for use in water or non-aggressive chemical applications

FEATURES / BENEFITS

- Unique package combines Turbine and LCD into a self-contained, compact, economical meter
- Local Display Computer features: 2 Non-Volatile Totals (Batch Total = Resettable, Total = Non-resettable) and Rate of Flow
- Output capabilities available to communicate with process control equipment
- Lightweight, compact design allows for easy installation
- AAA Alkaline battery life: 2 years
- 12 selectable engineering units (gallons or liters are standard defaults)
- Factory calibration

APPLICATIONS

- Plant Process Water
- Batching / Blending
- Water / Non-Aggressive Chemicals
- Ag Chemicals
- Solvents / Glycol
- Chemical Feed Lines

FLOMEC®

PRODUCT CONFIGURATION

1 PRODUCT IDENTIFIER:

A1 = Electronic Digital Meter

2 ELECTRONIC CHOICE:

Computer Display, Meter Mounted

Q9 = Q9 2-Button Computer

*Computer Display & Module, Meter Mounted**

P9 = Q9 2-Button Computer w/Pulse Out Module, includes External Power and 10 ft. of Cable

42 = Q9 2-Button Computer w/4-20mA Module and 10 ft. of Cable

*Module, Meter Mounted (No Display)**

PO = Pulse Out (Unscaled) Conditioned Signal Module w/Cable

Retrofit Computer Kit (Display Only)

R9 = Q9 2-Button Computer Retrofit Kit (Replaces Q9 Display)

No Electronics - Turbine Only

XX = No Electronics - Turbine Only

**All Electronics Approvals Void*

3 CALIBRATION:

GM = Factory Default Calibration in Gallons

LM = Factory Default Calibration in Liters

XX = No Computer

4 TURBINE SIZE:

N025 = Nylon - Low Flow

N100 = Nylon - 1 inch

X### = No Turbine**

***When ordering Display Only, the ### should be the turbine size.*

5 FITTING TYPE:

N = NPT (Female)

I = ISO (Female) BSPT

X = No Turbine

6 PACKAGING:

*With FM, ATEX & IEC Approval for **HAZARDOUS AREA***

A1 = Standard or Low Flow, 1 inch (w/Q9 & R9 Electronics Choice)

A2 = Standard, 2 inch (w/Q9 & R9 Electronics Choice)

B1 = Standard or Low Flow, 1 inch Turbine Only

B3 = Display Only

*Non-Approved Version - **SAFE AREA ONLY***

C2 = Low Flow and 1 inch Turbines (w/P9, 42, & PO Electronics Choice)

1 2 3 4 5 6
---->>>> A1 Q9 GM N100 N A1

APPROVALS†



IP65



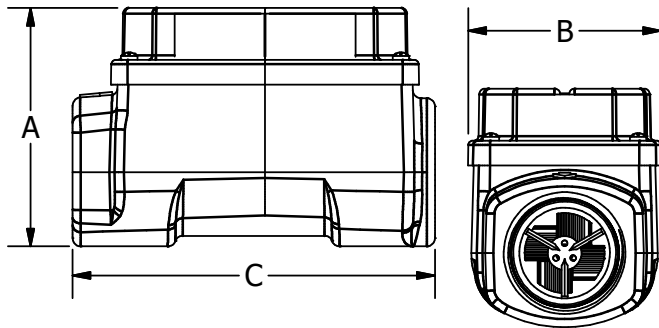
†All A1 Series Q9 Displays have the CE, NEMA 4, and IP65 approval.

SPECIFICATIONS

| | | | |
|------------------------------|------|------------------------------------------|----------------|
| Meter Sizes Available: | | N025 (Low Flow), N100 (1 inch) | |
| Design Type: | N025 | Paddlewheel | |
| | N100 | Turbine | |
| Fitting Size / Fitting Type: | N025 | 1 inch / NPT, ISO ⁺ (Female) | |
| | N100 | 1 inch / NPT, ISO ⁺ (Female) | |
| Flow Range: | N025 | 0.3 - 3 GPM | 1 - 11 L/min |
| | N100 | 3 - 50 GPM | 11 - 190 L/min |
| Accuracy (% of Reading): | | N025: Application Dependent ¹ | |
| | | N100: $\pm 1.5\%$ | |
| Repeatability: | N025 | $\pm 1.0\%$ | |
| | N100 | $\pm 0.2\%$ | |

^{*}ISO 7 Designation is RC.

¹Accuracy can vary up to $\pm 5\%$ depending on installation and fluid type. Field calibration is recommended for best accuracy.



DIMENSIONS

| | N025, 1 in. Low Flow | N100, 1 in. |
|-------------|-------------------------|----------------------|
| A = Height* | 2.5 in. (6.3 cm) | 2.5 in. (6.3 cm) |
| B = Width | 2.0 in. (5.1 cm) | 2.0 in. (5.1 cm) |
| C = Length | 4.0 in. (10.1 cm) | 4.0 in. (10.1 cm) |

*Height includes 0.7 in. (1.8 cm) for the computer electronics.

| | | |
|----------------------------------|---------------------------------------|-----------------------------------------|
| Pressure Rating (Nylon): | | 150 psi (10.3 bar) |
| Operating Temperature Range: | | -40° F to 250° F (-40° C to 121° C) |
| with Safe Area Only Display: | | 0° F to 140° F (-18° C to 60° C) |
| with Intrinsically Safe Display: | | 0° F to 129° F (-18° C to 54° C) |
| Typical K-Factor: | N025 | 2200 PPG (581 Pulses/L) |
| | N100 | 730 PPG (193 Pulses/L) |
| Frequency Range: | N025 | 11-110 Hz @ 0.3-3 GPM (1-11 L/min) |
| | N100 | 36.5-608.3 Hz @ 3-50 GPM (11-190 L/min) |
| Recommended Strainer Size: | N025 | 55 mesh (275 μ m) |
| | N100 | 28 mesh (700 μ m) |
| Wetted Materials (Nylon): | Housing: | Nylon |
| | Bearings: | Ceramic (96% Alumina) |
| | Shaft: | Tungsten Carbide |
| | Rotor: | Nylon |
| | Rings: | 316 Stainless Steel |
| Calibration Report: | Comes standard with A1 Series meters. | |
| | N.I.S.T. – Certification available. | |

ACCESSORIES

| Part No. | Description |
|-----------|-----------------------------------------------------------|
| 113275-10 | FM Approved Remote Kit Assembly [†] |
| 113435-10 | Conditioned Signal Output Module |
| 125260-02 | 90° Display Adapter Kit |
| 120077-01 | FM Approved Sensor Kit [†] |
| 120077-02 | ATEX Approved Sensor Kit [†] |
| 113524-01 | Connector Kit for FM or ATEX Approved Sensor [†] |
| 125060-10 | Pulse Out, External Power, Scaled Pulse Module |
| 125100-10 | 4-20 mA Module |

[†]Does not make Non-FM or Non-ATEX Approved meters FM or ATEX Approved.



TP050

- Shown with RT14 Electrical Option (TP050S1T1-211R5)

Additional meter configurations available.

PRODUCT CONFIGURATION

1 PRODUCT IDENTIFIER:

TP010 = ½ inch (15mm) 0.5-5 GPM (1.8-18 L/min)
TP012 = ¾ inch (20mm) 1-10 GPM (3.8-37.9 L/min)
TP015 = ¾ inch (20mm) 1.8-18 GPM (6.7-67 L/min)
TP020 = ¾ inch (20mm) 3.6-36 GPM (13-130 L/min)
TP025 = 1 inch (25mm) 7-70 GPM (27-270 L/min)
TP040 = 1 ½ inch (40mm) 15-150 GPM (57-570 L/min)
TP050 = 2 inch (50mm) 30-300 GPM (113-1130 L/min)
TP080 = 3 inch (80mm) 60-600 GPM (225-2250 L/min)
TP0100 = 4 inch (100mm) 120-1200 GPM (450-4500 L/min)
TP0150 = 6 inch (150mm) 242-2420 GPM (916-9160 L/min)

2 BODY MATERIAL:

S = 316 Stainless Steel - 3500 psi (250 bar) max.

3 PROCESS CONNECTIONS:

1T1 = BSPP male threaded / One
2T1 = NPT male threaded / One
4C1 = ANSI-150 RF flanges (Carbon Steel) / One
4S1 = ANSI-150 RF flanges (316SS) / One
5C1 = ANSI-300 RF flanges (Carbon Steel) / One
5S1 = ANSI-300 RF flanges (316SS) / One
7C1 = PN16 DIN flanges (Carbon Steel) / One
7S1 = PN16 DIN flanges (316SS) / One

4 ELECTRICAL CONNECTION:

-1 = Military Style Connector (required for no electrical option)
-2 = Flying Leads (required for electrical options)

TP SERIES TURBINE FLOWMETER

FLOMEC® TP Series Flowmeters measure flows of low viscosity liquids from 0.5 to 2420 gallons/min (1.8 to 9160 litres/min) in a range of sizes from ½ to 6 inches (15 to 150mm). Installation orientation is horizontally or vertically, and they are available with hazardous area ATEX, IECEx, and Intrinsically Safe (IS) certifications.

FEATURES / BENEFITS

- High accuracy and repeatability, direct reading flowmeter
- Wide flow range
- Rugged and compact design
- IS hazardous area versions available
- Integral 4-20mA option

GENERAL SPECIFICATIONS

| | |
|--------------------------|-----------------------------------------------------------------------|
| Suits Pipe Sizes | ½ - 6 inches (15-150mm) |
| Pipe Connections* | NPT, BSP, ANSI #150, ANSI #300, PN16 DIN* |
| Accuracy (@ cP) | ± 0.5% of reading |
| Viscosity Range | 0.5 - 10cP |
| Temperature Range | -40° to +450° F (-40° to +232° C)** |
| Wetted Materials | 316SS Bearing support & body, 431SS rotor, Tungsten Carbide bearing |
| Maximum Pressure | 3625 psi (250 bar) |
| Protection Class | IP66/67 (NEMA4X), optional I.S. (Intrinsically Safe) Integral options |

*Threaded meters available for ½ – 2 inches only.

**With high temperature pickup option.

5 PICK-OFF TYPE:

11 = Standard (250° F [120° C] max.)
21 = High Temp (450° F [232° C] max.)
31 = ATEX/IECEx approved intrinsically safe 250° F [120° C] max.) (only available with R6, F19 or No Electrical Option)
51 = Amplified (5-30V (dc) supply tracking pulse) 250° F [120° C] max.)

6 ELECTRICAL OPTIONS:

Blank = No Electrical Option
JB = Junction Box
R4 = RT40 Backlit Rate Totalizer (Alloy housing with facia protector) (Requires Pick-off Type 11)
R5 = RT14 Backlit Rate Totalizer with scaled pulse, alarms and 4-20mA (GRN housing) (Requires Pick-off Type 11)
R6 = RT14 IECEx/ATEX Intrinsically Safe Rate Totalizer with 4-20mA and Pulse Outputs (GRN housing) (Requires Pick-off Type 31)
R7 = RT40 Backlit Rate Totalizer (GRN housing with facia protector) (Requires Pick-off Type 11)
F18 = F018 Backlit Rate Totalizer with 4-20mA and Pulse Outputs, and HART (Requires Pick-off Type 11)
F19 = IECEx/ATEX Backlit Rate Totalizer with 4-20mA and Pulse Outputs, and HART (Requires Pick-off Type 31)

7 CALIBRATION:

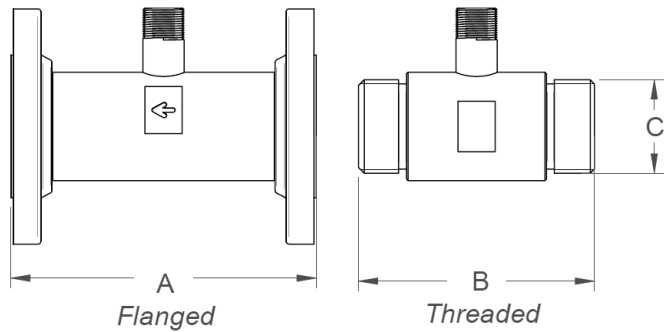
Blank = Display in Liters (DEFAULT)
G = Display in U.S. Gallons



1 2 3 4 5 6 7
 --->>>> TP050 S 1T1 -2 11 R5

DIMENSIONS

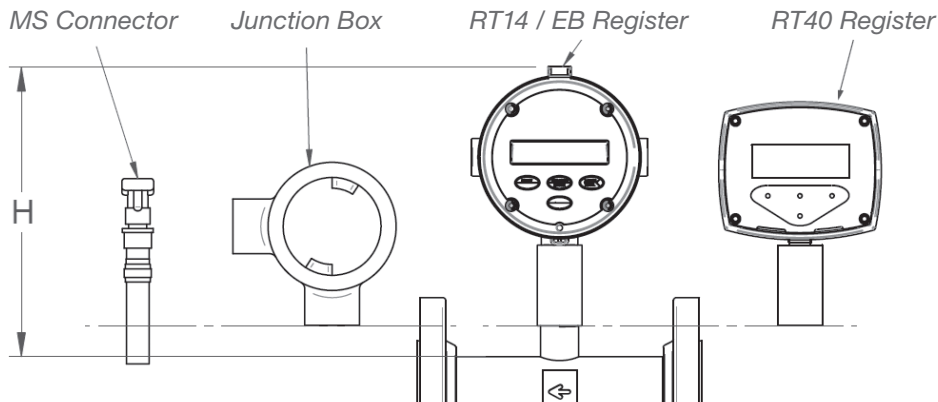
| Flowmeter Model | A | B | C |
|-----------------|-------------------|------------------|-----------------------------|
| TP010 | 5 in. (127mm) | 2.52 in. (64mm) | ½ in. (15mm) BSP or NPT |
| TP012 | 5 in. (127mm) | 2.52 in. (64mm) | ¾ in. (20mm) BSP or NPT |
| TP015 | 5 in. (127mm) | 2.52 in. (64mm) | ¾ in. (20mm) BSP or NPT |
| TP020 | 5.51 in. (140mm) | 3.27 in. (83mm) | ¾ in. (20mm) BSP or NPT |
| TP025 | 5.98 in. (152mm) | 3.50 in. (89mm) | 1 in. (25mm) BSP or NPT |
| TP040 | 7.01 in. (178mm) | 4.52 in. (115mm) | 1½ in. (40mm) BSP or NPT |
| TP050 | 7.76 in. (197mm) | 5.23 in. (133mm) | 2 in. (50mm) BSP or NPT |
| TP080 | 10 in. (254mm) | – | – |
| TP0100 | 14.01 in. (356mm) | – | – |
| TP0150 | 14.49 in. (368mm) | – | – |



APPLICATIONS

- Solvents
- Insecticides
- Water
- Light Hydraulic Oils
- Fuel
- Alcohols

CERTIFICATIONS



| Options | H |
|--------------|------------------|
| MS Connector | 4.64 in. (118mm) |
| Junction Box | 5.91 in. (150mm) |
| RT14 / EB11 | 8.27 in. (210mm) |
| RT40 | 7.28 in. (185mm) |



G SERIES SANITARY CLAMP HIGH TEMPERATURE (SIP) (PRECISION TURBINE METERS)

The G Series High Precision Meter is the most accurate of all the FLOMEC® Turbine Meters:

FEATURES / BENEFITS

- Meter includes a traditional design
- Available in a variety of sizes
- Low Profile option available

APPLICATIONS

- Fuel
- Batching
- Food & Beverage
- Petro Chemicals
- Pharmaceuticals
- Thin Viscosity Fluids Under 100 Centipoise
- Process Control
- Chemical Feed Lines
- Irrigation
- High Water Volume Mixing
- High Precision / High Pressure

PRODUCT CONFIGURATION

PRODUCT IDENTIFIER **1**

G = G Series Precision Turbine Meter

FITTING TYPE **2**

SC = Sanitary Clamp

SHAFT / SLEEVE BEARING / THRUST BEARING **3**

PS = Stainless Steel / PEEK / PEEK

TURBINE SIZE & FLOWRATE **4**

- 100 = 1" Turbine, 1-1/2" Clamp
- 100L = 1" Turbine, 1-1/2" Clamp, Low Profile Adapter
- 150 = 1-1/2" Turbine, 1-1/2" Clamp
- 150L = 1-1/2" Turbine, 1-1/2" Clamp, Low Profile Adapter
- 200 = 2" Turbine, 2" Clamp
- 200L = 2" Turbine, 2" Clamp, Low Profile Adapter

1 2 3 4
--->>>> **G SC PS -150**

APPROVALS

CIP

SIP

GSCPS Meters carry a



Sanitary Rating.

Flowmeters for milk and milk products, Number 28-04.

This meter meets the strict 3-A Sanitary Standards using the new "Third Party Verification" (TPV) program. Our methods of design, construction and traceability of components have been reviewed and approved.

The internals of this meter are machined or polished to meet 3-A self-draining and cleaning requirements (Ra 32). The GSCPS Meter meets Clean in Place (CIP), Steam in Place (SIP) and Clean Out of Place (COP) requirements.

SPECIFICATIONS

| | | | |
|------------------------------|------------------------------------------------------|------------------------|--------------------|
| Design Type: | Turbine | | |
| Fitting Type: | Sanitary Clamp | | |
| Housing Material: | 316 Stainless Steel | | |
| Meter Sizes Available: | | | |
| For GSCPS | 1" 1-1/2" 2" | | |
| Meter ID: | 1" --> 1-1/2" Fitting | | |
| | 1-1/2" --> 1-1/2" Fitting | | |
| | 2" --> 2" Fitting | | |
| Flow Range: | 1" (100) | 6.7 - 67 GPM | (25 - 252 L/min) |
| | 1-1/2"(150) | 17.7 - 177 GPM | (67 - 670 L/min) |
| | 2" (200) | 33 - 330 GPM | (125 - 1250 L/min) |
| Accuracy (Linearity): | ± 0.5% | | |
| Repeatability: | ± 0.1% | | |
| Pressure Rating: | Limited by fitting size, clamp size and temperature. | | |
| Operating Temperature Range: | | | |
| For GSCPS: | -100° F to 225° F (-74° C to 107° C) | | |
| For SIP (up to 1 hour): | 285° F (140° C) | | |
| Typical K-Factor: | 1" (100) | 896 PPG (237 Pulses/L) | |
| | 1-1/2"(150) | 340 PPG (90 Pulses/L) | |
| | 2" (200) | 181 PPG (48 Pulses/L) | |

ACCESSORIES / ELECTRONICS

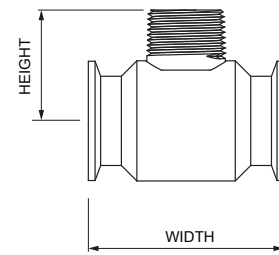
| Part No. | Description |
|---------------------------|-----------------------------------------|
| 80001101 | Weather proof enclosure - Zinc |
| 80001105 | Weather proof enclosure - SS |
| F Series (F018/F127/F130) | Remote Electronics |
| 145506-01 | Kit, Adapter, G Series-QSI1-Q09 Display |
| 145506-02 | Kit, Adapter, G Series-QSI2-Q09 Display |
| 145506-03 | Kit, Adapter, G Series-QSI3-Q09 Display |
| 145506-04 | Kit, Adapter, G Series-QSI1-No Display |
| 145506-05 | Kit, Adapter, G Series-QSI2-No Display |
| 145506-06 | Kit, Adapter, G Series-QSI3-No Display |

| | | |
|-----------------------------------|--------------------------------------|----------------------------|
| Wetted Materials: | Housing: | 316 Stainless Steel |
| | Bushings & Bearings: | PEEK |
| | Shaft: | 316 Stainless Steel |
| | Rotor: | CD4MCu Stainless Steel |
| | Rotor Supports: | 316 Stainless Steel |
| | Retaining Rings: | 300 Series Stainless Steel |
| Recommended Strainer Size: | 1" | 40 mesh (420 µm) |
| | 1-1/2" | 18 mesh (1000 µm) |
| | 2" | 14 mesh (1410 µm) |
| Frequency Output: | 1" (100) | 100 - 1000 Hz |
| | 1-1/2" (150) | 100 - 1000 Hz |
| | 2" (200) | 100 - 1000 Hz |
| Calibration Report: | Comes standard with G Series meters. | |
| | N.I.S.T. - Certification available. | |

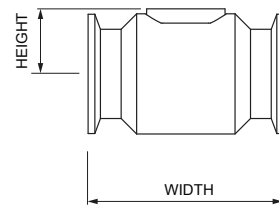
DIMENSIONS

| Meter Size | Length " (mm) | Height " (mm) |
|------------|---------------|---------------|
| 1" | 3.56 (90) | 1.84 (47) |
| 1-1/2" | 4.59 (116) | 2.11 (53) |
| 2" | 6.06 (154) | 2.39 (61) |

GSCPS STANDARD



GSCPS LOW PROFILE



Service & Warranty: For technical assistance, warranty replacement or repair contact your **FLOMEC®** or **GPI®** distributor: In North or South America: **888-996-3837 / FLOMEC.net**
Outside North or South America: **+61 2 9540 4433 / FLOMEC.net**